

## English Folk Song Modes

Here is the first line of the popular Snookish tune, *Timon's Getting Married*:



If we take all the notes in the tune, and arrange them in order of pitch, we can see the scale from which the tune is derived, which is C Major:



Different modes use different notes, and the theory followed by many early folk music collectors was that the modes were used in ancient and medieval church music to create different effects, and remained prevalent in folk music.

If we apply one of these modes to *Timon's Getting Married*, you can clearly hear a difference. Here is C Mixolydian mode:



And here is *Timon's Getting Married* in C Mixolydian:



The most common scales or modes found in English folk songs are the Major scale; the Mixolydian mode (which we've just seen); the Dorian mode; and the Aeolian mode.

On the next page, you'll find each of these modes in order, and the corresponding modal version of *Timon's Getting Married*

## C Dorian

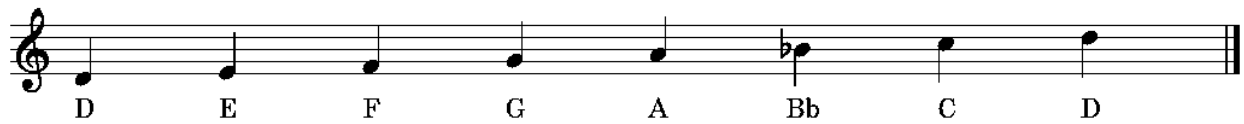


## C Aeolian



In the analysis of *I Can Hear A Siren*, we talk about D Aeolian and G Aeolian. These are given below

## D Aeolian



## G Aeolian

